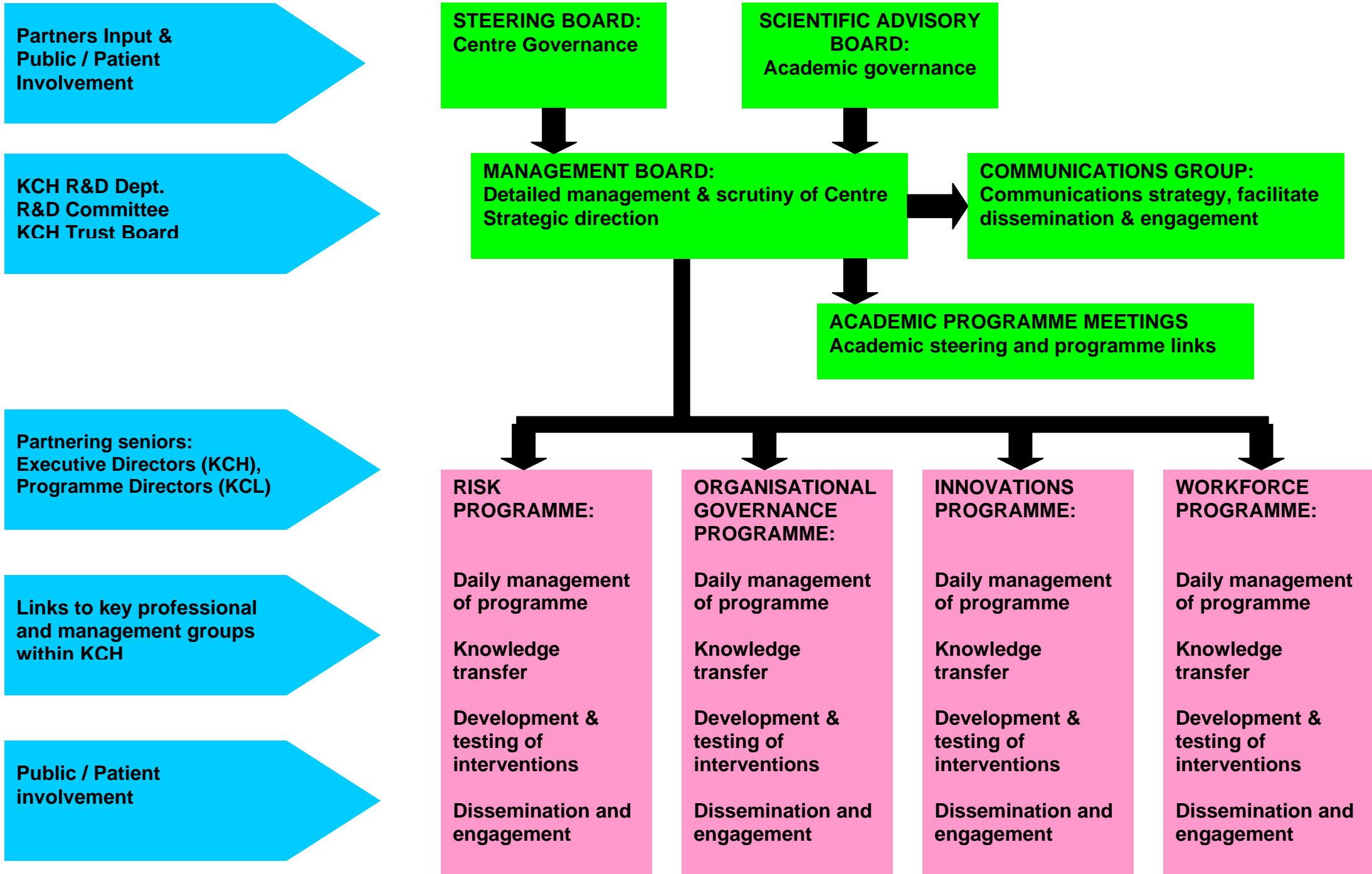


PSSQ RESEARCH CENTRE ORGANISATIONAL STRUCTURE



PSSQ RESEARCH CENTRE ORGANISATIONAL MEMBERSHIP

Steering Committee:

Malcolm Lowe-Lauri - KCH Chief Executive (Chair)

Naomi Fulop - King's PSSQ Centre Director

Susan Ormrod - King's PSSQ Centre Manager (Secretary)

Hiten Dodhia - Assistant Director Public health Lambeth PCT

Philippa Garety - Head of Psychology SLAM

Anne MacNaughton / Hedi Argent - KCH Public Governor

Joanna Murray - Senior Lecturer IoP & SLAM Specialist BRC

Geraldine O'Dea - Acting Director Public Health Southwark PCT

Eileen Sills - Chief Nurse & Director Clinical Services GSTT

Richard Trembath / Graham Lord - Deputy / Director Director GSTT / Kings BRC

Scientific Advisory Board:

Mark Berg – Institute of Health Policy & Management, EU Medical Centre Erasmus University

Mike Clarke – Director, Royal United Services Institute

Malcolm Lowe-Lauri – Chief Executive, (University Hospitals of Leicester NHS Trust w.e.f. May 2008)

Lorna McKee – Chair in Management Studies, Business School, University of Aberdeen

John Øvretveit – Director of Research, Medical Management Centre, Karolinska Institutet

Jaap Paauwe – Faculty of Social & Behavioural Sciences, Tilburg University

Andrew Webster – Director of Science and Technology, University of York

Naomi Fulop – King's PSSQ Centre Director

Annelise Dodds – PSSQ Programme Director

David Guest – PSSQ Programme Director

Jane Sandall – PSSQ Programme Director

Management Board:

Naomi Fulop – King's PSSQ Centre Director (Chair)
Annelise Dodds – PSSQ Programme Director
Ernest Choy / Tim Newton - KCH R&D Director / Deputy Director
David Guest – PSSQ Programme Director
Zoe Lelliott – KCH Head of Strategy & R&D Management
Susan Ormrod – King's PSSQ Centre Manager
Jane Sandall – PSSQ Programme Director
Charles Wolfe – Head of Health Care Social Research Division KCL & R&D Director GSTT

Communications Group:

Naomi Fulop – King's PSSQ Centre Director (Chair)
Annelise Dodds – PSSQ Programme Director
Zoe Lelliott – KCH Head of Strategy & R&D Management
Sally Lingard – KCH Head of Communications
Kate Mackenzie-Davey – External Advisor, Head of Dept, Organisational Psychology, Birkbeck University of London
Susan Ormrod – Kings PSSQ Centre Manager
John Underwood – External Advisor – Freshwater Plc

Organisational Governance Programme:

Naomi Fulop – King's PSSQ Centre Director (
Malcolm Lowe-Lauri – Chief Executive & KCH Executive Lead
Henry Rothstein – Key Researcher
Charlotte Humphrey – Key Researcher
new appointment: tbc – Research Associate
new appointment: tbc – Research Fellow / Associate
Carin Magnusson – CASE Studentship
Plus: Link with Public/Patient Governors KCH

Risk Programme

Annelise Dodds - Programme Director
John Moxham – Medical Director & KCH Executive Lead
Brian Salter – Key Researcher
Brooke Rogers – Key Researcher
Sharon Gilad – Key Researcher
Naonori Kodate – Research Associate
new appointment: tbc – Research Fellow
Plus: Link with Public/Patient Governors KCH

Workforce Programme

David Guest – Programme Director
Mike Griffin- Director of HR & KCH Executive Lead
Riccardo Peccei – Key Researcher
Graeme Lockwood - Key Researcher
Sarah Pajak – Research Associate
Chris Woodrow – Research Associate
Plus: Link with Public/Patient Governors KCH

Innovation Programme

Jane Sandall – Programme Director
Ernest Choy – Director of R&D KCH Executive Lead
Martin Gulliford – Key Researcher
Myfanwy Morgan – Key Researcher
Susanna Finlay – Research Associate
Nicola MacIntosh – Research Associate
Plus: Link with Public/Patient Governors KCH